

## Product Information

Corning® Gorilla® Glass offers a unique combination of toughness and elegance, enabling exciting new design options for interior architecture.

*Thin, lightweight Corning Gorilla Glass allows refurbishment and new design within tight elevator weight budgets.*

### Benefits

- Formed from Corning's proprietary fusion process
- The optical clarity of the glass enables customers to realize their vision through true color match - whether it's pristine whites or vibrant colors
- Tough and durable, thin, Corning Gorilla Glass preserves and helps protect the material beneath it with excellent durability and scratch resistance
- Provides endless design possibilities for custom decoration

### Properties

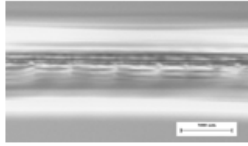
Maximum Size	mm	in
CG	2030 x 1200	79.92 x 47.24
AG	2020 x 1170	79.52 x 46.06
Standard glass thickness	2.0 mm (others available upon request)	
Standard tolerances	Length and width: ±0.5mm Thickness: ±0.05mm	
Weight	4.88 kg/m <sup>2</sup> at 2.0 mm	
Chemical strengthening		
Compressive stress (typical)	>680 MPa	
Depth of layer (typical)	>40 µm	
Standards testing	Meets ASTM standards for flat glass. With qualified panel backer, meets U.S. standards for indoor use, including: <ul style="list-style-type: none"> <li>• CPSC 16</li> <li>• CFR 1201</li> <li>• ANSI Z97.1-2009</li> <li>• ASTM E84</li> <li>• ANSI maximum impact Class A</li> <li>• CPSC maximum impact level Cat II</li> </ul>	
Standard edge profile	Pencil	



## Greater Scratch Resistance

### Float Soda-Lime Glass

Air tempered  
3.2 mm



### Gorilla Glass

3.1 mm



Scratch Load  
50 gF (0.1 lbF)

When subjected to a scratch resistance test involving loads of 50 g force, Corning Gorilla Glass showed greater scratch resistance compared to air tempered soda-lime glass. Results shown at 100  $\mu$ m.

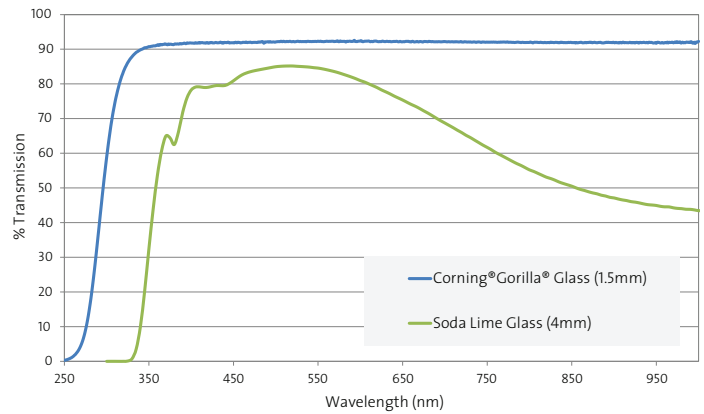


## Lighter Weight

Glass	Thickness (mm)	Weight per area	
		kg/m <sup>2</sup>	lb/ft <sup>2</sup>
Corning Gorilla Glass	2.8	5.7	1.2
Soda-Lime Glass	3.2	8.1	1.6

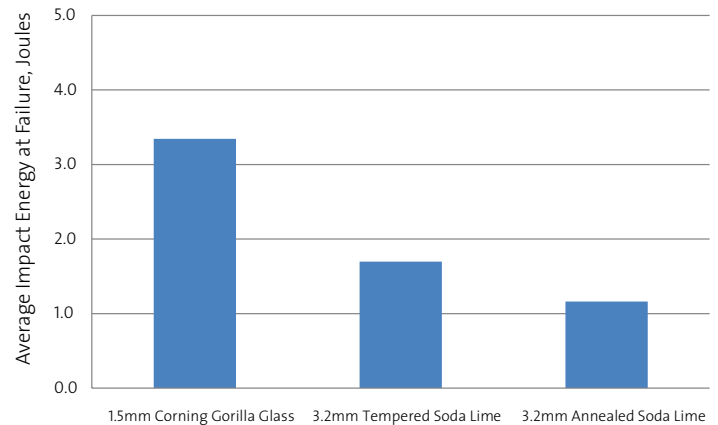
Corning Gorilla Glass offers similar performance with a thinner glass that is lighter than a typical soda-lime product.

## Superior Optical Clarity



Compared to soda-lime glass, Corning Gorilla Glass has a higher transmission performance and superior optical clarity in the visible range.

## Greater Impact Resistance



Data is based on ball-drop impact with 535 g steel ball.

Corning Gorilla Glass demonstrated greater resistance to impact as compared to soda-lime glass typically used in interior architecture applications.

# CORNING

For more information: [GorillaGlassSales@corning.com](mailto:GorillaGlassSales@corning.com), [CorningGorillaGlass.com](http://CorningGorillaGlass.com)  
Corning and Gorilla are registered trademarks of Corning Incorporated, Corning, N.Y., USA  
©2019 Corning Incorporated. All Rights Reserved.