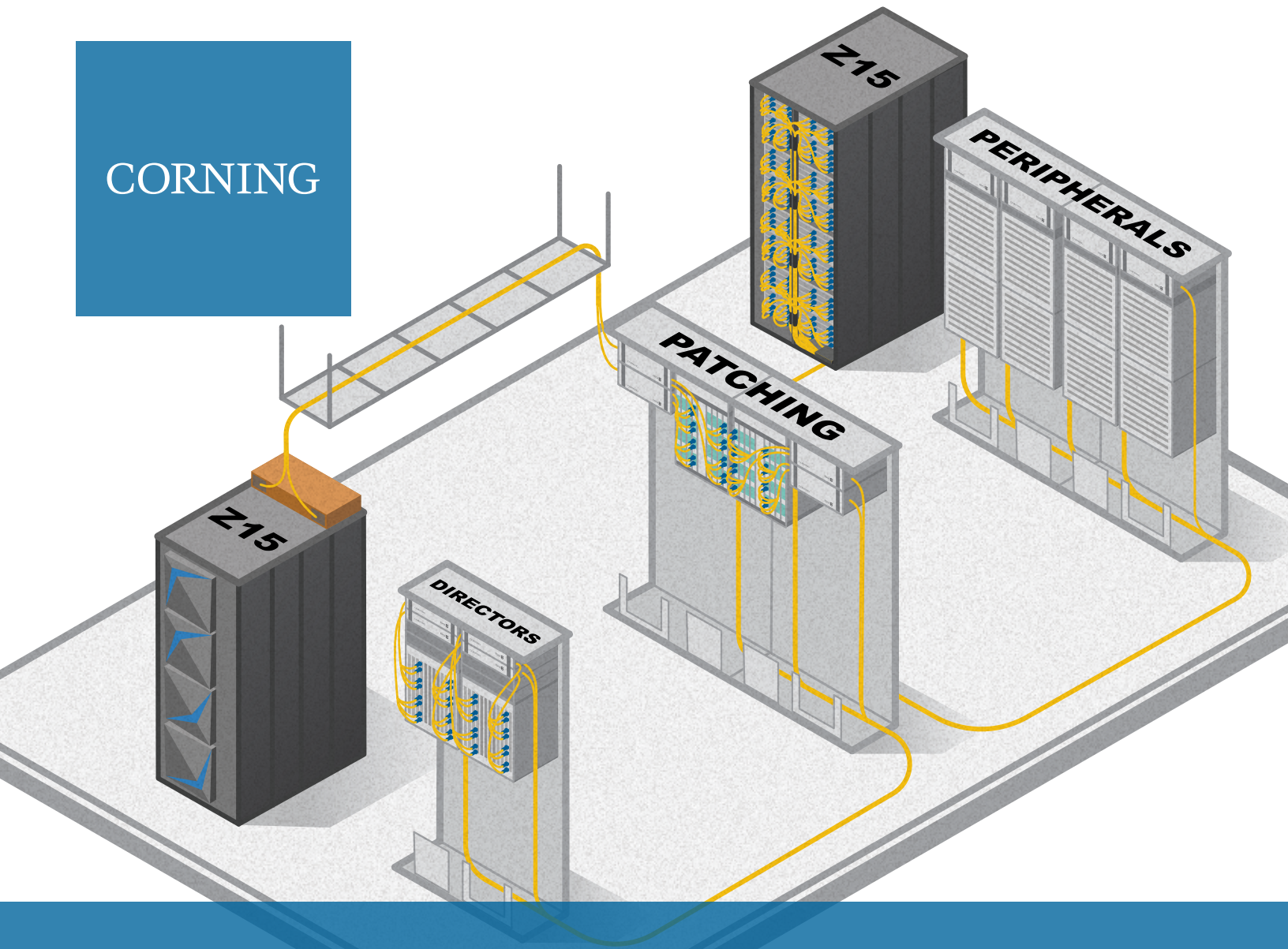


CORNING



# How to Cable the z15 Mainframe

From the mainframe to the directors, Corning solutions are ideally suited for the innovative z15 system. Explore the products that can deliver the flexibility, responsiveness, and security you need to transform your business.

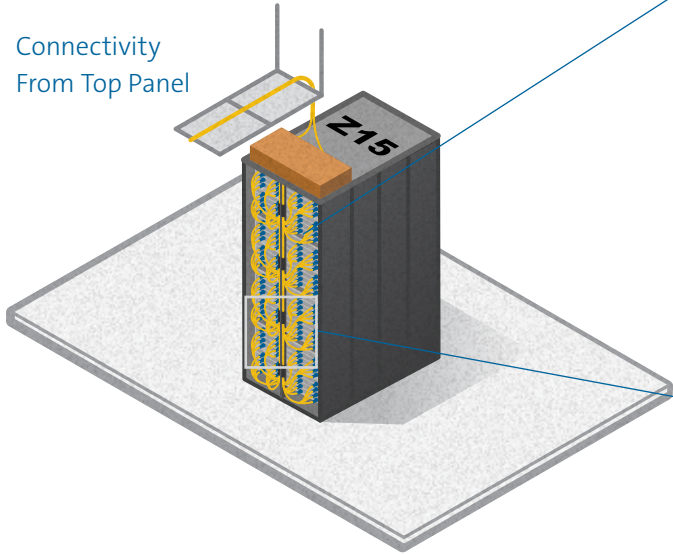
For more information  
contact your local Corning sales engineer or  
call 1-800-743-2671 for customer service.

# Cabling Sections

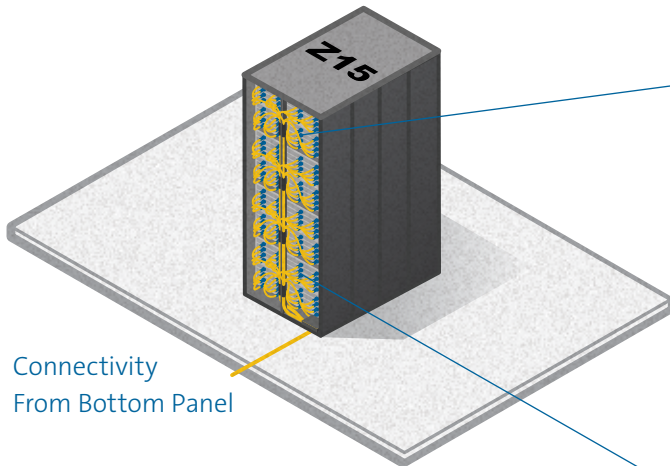
## Mainframe

EDGE8® fiber harnesses utilize 8-fiber MTP®/MPO-to-LC designed to minimize cable congestion.

Connectivity  
From Top Panel



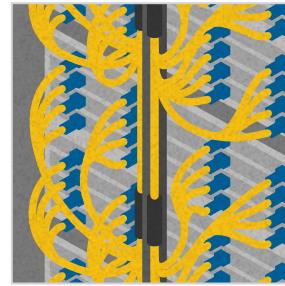
Connectivity  
From Bottom Panel



## Mainframe – Corning EDGE8® Harness Installation



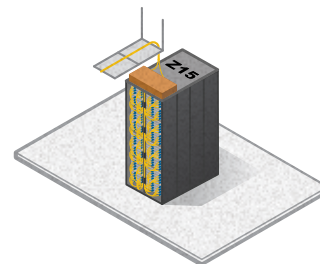
Easily organize Corning harnesses to connect FICON ports (LC) to the MTP®/MPO panel in the z15 mainframe.



Sized to minimize congestion, allowing for easy access to the FICON ports.



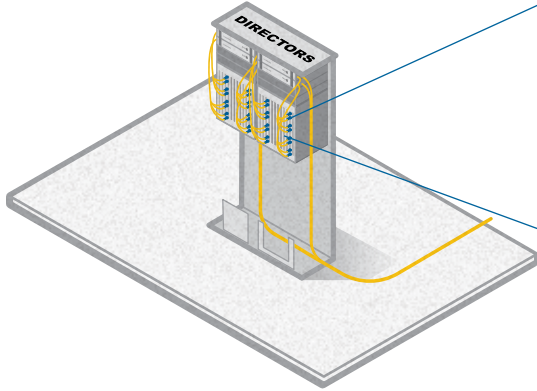
8-fiber harnesses for I/O drawers optimize port mapping with 100% fiber utilization, in contrast to Base-12 harnesses which result in unutilized fibers and no danglers.



Harness utilization in the mainframe allows moves, adds, and changes without jeopardizing electronic ports.

### Directors

Port replication housings (PRHs) can be aligned vertically and horizontally to match different director manufacturers' specifications and configurations.



### EDGE8® Harness

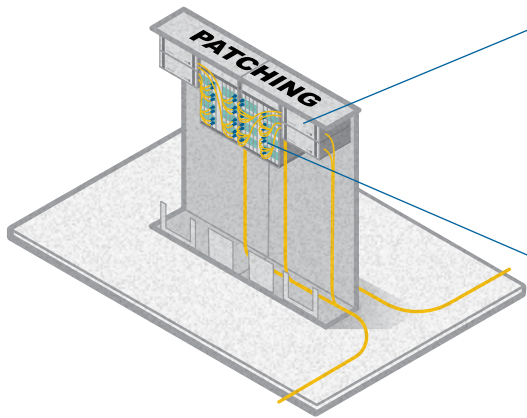


### EDGE™ Port Replication Housing



### Patching

Modular and scalable components enable connectivity between the mainframe, director, and peripherals.



### EDGE8 MTP® to LC Module

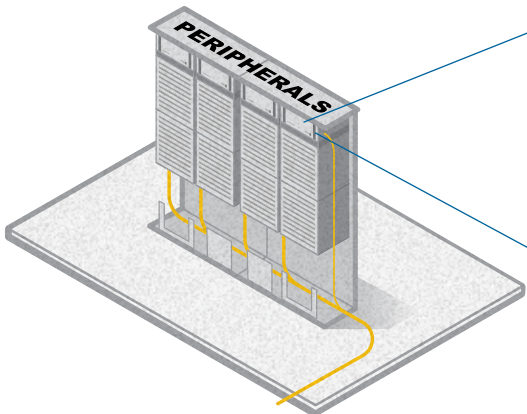


### Reverse Polarity Uniboot Duplex Jumper



### Peripherals

Optimized solutions for maximizing scalability and minimizing cable congestion.



### EDGE8 MTP Adapter Panel



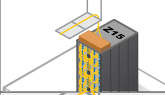













### EDGE8 Housing





# Products

Let us connect you to the cabling solutions you need to optimize your business and maximize ROI. Our housing units, panels, and mainframes, and harnesses are designed for flexibility, easy installation, and secure performance.

IBM Cabling Products		
Product Name	Features	Image
IBM z15 Mainframe	<ul style="list-style-type: none"> <li>Deliver security, privacy, and resiliency at scale as part of your enterprise-wide cloud infrastructure</li> <li>Enable cloud-native services while extending the value of your most valuable data and application investments</li> </ul>	
01ku546 IBM Panel	<ul style="list-style-type: none"> <li>MTP® coupler along with MTP/MPO harnesses allow for decongestion connectivity in the mainframe</li> <li>Protects FICON ports from multiple matings</li> <li>Enables structured cabling</li> </ul>	
EDGE8® Harness	<ul style="list-style-type: none"> <li>MTP PRO connectors which allow for pinning and polarity changes in the field</li> <li>Corning® CleanAdvantage™ Technology with optimized dust caps</li> <li>Hook-and-strap, spine-relief solution for the IBM z15 mainframe with 7-ft harness and 12-in legs</li> </ul>	
EDGE8 MTP Trunk Cable	<ul style="list-style-type: none"> <li>MTP PRO connectors allow for pinning and polarity changes in the field</li> <li>CleanAdvantage Technology with optimized dust caps</li> <li>Available in single-mode and multimode in 8-288 fiber counts</li> </ul>	
EDGE8 MTP-to-LC Module	<ul style="list-style-type: none"> <li>Provides the interface between the MTP connector on the trunk and the LC duplex jumpers or harnesses</li> </ul>	
Reverse Polarity Uniboot Duplex Jumper	<ul style="list-style-type: none"> <li>Quick-and-easy conversion from a TIA-568 A-B polarity to a TIA-568 A-A polarity without exposing the fibers or needing any tools</li> <li>Insertion loss: 0.5 dB (single-mode and multimode)</li> </ul>	
EDGE8 MTP Adapter Panel	<ul style="list-style-type: none"> <li>Enables a pay-as-you-grow approach</li> <li>Available in 1-4 adapters per panel</li> </ul>	
8-Fiber MTP PRO Jumper	<ul style="list-style-type: none"> <li>Reduce risk with easy-to-change pinning and polarity in the field</li> <li>Seamless migration to higher data rates in the data center when used in conjunction with our EDGE8 pinned trunks</li> </ul>	
Fiber Cable Assembly OS2 LC UPC duplex to LC UPC duplex	<ul style="list-style-type: none"> <li>Configure high-fiber-count assemblies with connector type, fiber count, fiber type, cable length, and unit of measurement</li> <li>Fiber counts range from 2 to 144</li> </ul>	
EDGE8 Housing	<ul style="list-style-type: none"> <li>Available in 1U, 2U, and 4U</li> <li>Flexibility of installing both EDGE8 solutions or Plug &amp; Play™ systems cable designs</li> </ul>	
EDGE™ Port Replication Housing	<ul style="list-style-type: none"> <li>EDGE port replication housing is optimized to support storage area networks (SAN) and local area network (LAN) switches</li> <li>Modular construction allows line card panels to be installed horizontally or vertically, and optional blank panels provide customization to match unique vendor equipment layouts.</li> </ul>	
EDGE8 Housing, FX Mounting Bracket	<ul style="list-style-type: none"> <li>EDGE8-CP12-PRH</li> <li>Port replication trays designed for EDGE8 modules or EDGE8 adapter panels</li> <li>Base-8 configuration</li> </ul>	
Port Replication Housing Accessory Trays with LC-to-LC Panels	<ul style="list-style-type: none"> <li>EDGE-CP96-AE PRH</li> <li>Port replication housing trays with LC-to-LC panels built in Base-8 construction</li> </ul>	
Plug & Play Accessory Bracket Plug & Play Systems	<ul style="list-style-type: none"> <li>0-U Rack mount</li> <li>12 inches for 12 U-clips</li> </ul>	

CORNING

Corning Optical Communications LLC • 4200 Corning Place • Charlotte, NC 28216 USA  
800-743-2675 • FAX: 828-325-5060 • International: +1-828-901-5000 • [www.corning.com/opcomm](http://www.corning.com/opcomm)

Corning Optical Communications reserves the right to improve, enhance, and modify the features and specifications of Corning Optical Communications products without prior notification. A complete listing of the trademarks of Corning Optical Communications is available at [www.corning.com/opcomm/](http://www.corning.com/opcomm/) trademarks. All other trademarks are the properties of their respective owners. Corning Optical Communications is ISO 9001 certified. © 2020 Corning Optical Communications. All rights reserved. ANX-223-AEN / November 2020