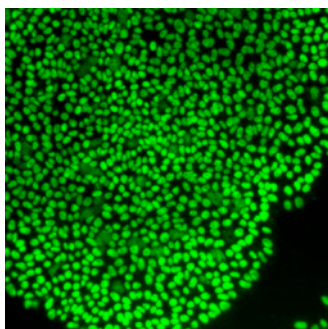


# Corning® Synthemax™ II-SC Substrate Self-coating Protocol

Self-coating synthetic surface for stem cells

CORNING



## Coating Materials

- ▶ A vial of sterile Corning Synthemax II-SC substrate (store at -20°C) (Corning Cat. No. 3535)
- ▶ Corning CellBIND culture vessels. For Corning Cat. Nos. refer to Tables 2 and 3.
- ▶ 5 mL Stripette™ serological pipets (Corning Cat. No. 4487)
- ▶ 10 mL Stripette serological pipets (Corning Cat. No. 4101)
- ▶ Water, cell culture grade (Corning Cat. No. 25-055-CI)

**Note:** All the following steps should be done under aseptic conditions using proper aseptic techniques.

## Reconstitution Procedure for Corning Synthemax II-SC Substrate

1. Using a 10 mL pipet, add 10 mL of cell culture grade water to the vial of Corning Synthemax II-SC substrate.
2. Pipet up and down several times, washing the walls of the vial, to ensure the complete reconstitution of the powder in water. This will result in 1 mg/mL Corning Synthemax II-SC stock solution.
3. Store Corning Synthemax II-SC stock solution at 4°C for up to 6 months or proceed to the vessel coating procedure below.

**Note:** For 2 mg sample vials, reconstitute entire vial using a 5 mL pipet and 2 mL of cell culture grade water.

## Vessel Coating Procedure

1. Dilute Corning Synthemax II-SC stock solution 1:40 in cell culture grade water to achieve a 0.025 mg/mL working solution final concentration. Refer to Table 1 for Corning Synthemax II-SC stock solution dilution guidelines.
2. Add appropriate volume of Corning Synthemax II-SC working solution to a culture vessel. Refer to Tables 2 and 3 for appropriate volumes of Corning Synthemax II-SC working solution to coat different vessel formats.
3. Cover vessel with lid and incubate at room temperature for 2 hours.
4. Aspirate all remaining solution (vessels will appear to be dry).
5. The vessel is ready to use, or can be stored at 4°C for up to 3 months.

**Note:** It is critical to use the exact dispense volumes given in Tables 1 through 3 to ensure a concentration of 5 µg/cm<sup>2</sup> on the surface.

**Table 1.** Corning® Synthemax® II-SC Stock Solution Dilution Guidelines

Reagent	Volume (mL)	Volume (mL)	Volume (mL)
Synthemax II-SC stock solution (1 mg/mL)	1	5	10
Water, cell culture grade	39	195	390
Final volume of Corning Synthemax II-SC working solution (0.025 mg/mL)	40	200	400

**Table 2.** Recommended Volume of Corning Synthemax II-SC Working Solution for Coating Multiwell Plates

Cat. No.	Culture Vessel	Growth Area per Well (cm <sup>2</sup> )	Volume of 0.025 mg/mL Corning Synthemax II-SC Working Solution per Well (mL)
3335	6-well	9.5	2
3336	12-well	3.8	0.8
3337	24-well	1.9	0.4
3338	48-well	0.95	0.2
3300	96-well	0.32	0.1

**Table 3.** Recommended Volume of Corning Synthemax II-SC Working Solution for Coating Flasks

Cat. No.	Culture Vessel	Growth Area (cm <sup>2</sup> )	Volume of 0.025 mg/mL Corning Synthemax II-SC Working Solution (mL)
3289	T-25	25	5
3290	T-75	75	15
3291	T-150	150	30
3292	T-175	175	35
3293	T-225	225	45

**Note:** Be sure to review the SDS and dispose of all Corning Synthemax II-SC liquid waste as chemical waste in appropriate lab disposal site. In addition, use all appropriate cell culture personal protective equipment (lab coat and gloves) when handling Corning Synthemax II-SC solution.

For more specific information on claims, visit the Certificates page at [www.corning.com/lifesciences](http://www.corning.com/lifesciences).

**Warranty/Disclaimer:** Unless otherwise specified, all products are for research use only. Not intended for use in diagnostic or therapeutic procedures. Not for use in humans. Corning Life Sciences makes no claims regarding the performance of these products for clinical or diagnostic applications.

For additional product or technical information, visit [www.corning.com/lifesciences](http://www.corning.com/lifesciences) or call 800.492.1110. Outside the United States, call +1.978.442.2200 or contact your local Corning sales office.

#### Corning Incorporated Life Sciences

836 North St.  
Building 300, Suite 3401  
Tewksbury, MA 01876  
t 800.492.1110  
t 978.442.2200  
f 978.442.2476  
[www.corning.com/lifesciences](http://www.corning.com/lifesciences)

#### Worldwide Support Offices

##### ASIA/PACIFIC

**Australia/New Zealand**  
t 61 427286832

**China**  
t 86 21 3338 4338  
f 86 21 3338 4300

**India**  
t 91 124 4604000  
f 91 124 4604099

**Japan**  
t 81 3-3586 1996  
f 81 3-3586 1291

**Korea**  
t 82 2-796-9500  
f 82 2-796-9300

**Singapore**  
t 65 6572-9740  
f 65 6861-2913

**Taiwan**  
t 886 2-2716-0338  
f 886 2-2516-7500

#### EUROPE

**France**  
t 0800 916 882  
f 0800 918 636

**Germany**  
t 0800 101 1153  
f 0800 101 2427

**The Netherlands**  
t 31 20 655 79 28  
f 31 20 659 76 73

**United Kingdom**  
t 0800 376 8660  
f 0800 279 1117

#### All Other European Countries

t 31 (0) 20 659 60 51  
f 31 (0) 20 659 76 73

**LATIN AMERICA**  
grupoLA@corning.com

**Brasil**  
t (55-11) 3089-7400

**Mexico**  
t (52-81) 8158-8400

**CORNING** | **FALCON** | **AXYGEN** | **GOSELIN** | **PYREX**