

# Corning® X-LAB® System

CORNING



Current cell isolation methods can be labor intensive, highly variable, and lead to poor yields and/or viability. Many of these methods require the usage of chemicals, filters, or other reagents to enable the isolation and harvest of the cells of interest.

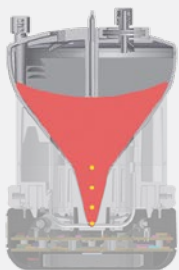
The Corning X-LAB System is designed to separate and harvest a programmable volume of target cell populations from blood and blood products in a closed, sterile device. Customizable process programming, automated separation of samples into three chambers, and highly sensitive infrared sensors for cell separation ensure consistent, reliable, efficient, high-recovery results.

Processing data can be transferred to X-SERIES® DataTrak software to further support GMP processing, monitoring and reporting of information.

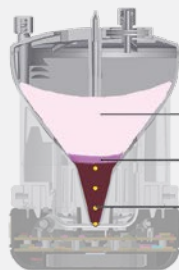
The Corning X-LAB System is a flexible solution for efficient, reliable, and reproducible Ficoll-free recovery of target cell populations from blood and blood products.

- ▶ Automated, functionally closed, sterile system
- ▶ Average processing time of 35 minutes\*  
\*Depending on source material
- ▶ Ficoll-free sedimentation-based harvest
- ▶ Barcode tracking of supplies and process steps electronically
- ▶ Consistent, high recovery (>90%) of viable cells
- ▶ Precise selection of target cells
- ▶ Customized protocols
- ▶ Single-use, disposable cartridge
- ▶ Process 40 mL to 240 mL
- ▶ US class I medical devices
- ▶ Programmable harvest volume of 3 mL to 40 mL

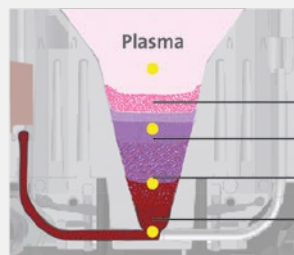
## How it Works



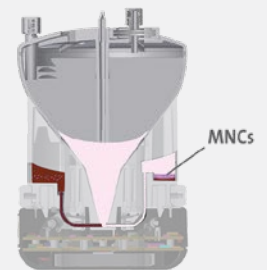
Cartridge with blood in central chamber



Centrifugation separates cell types by density



Red blood cells are transferred to the depletion chamber



Target cells are isolated in the sterile harvest chamber



35-MINUTE PROCESSING TIME





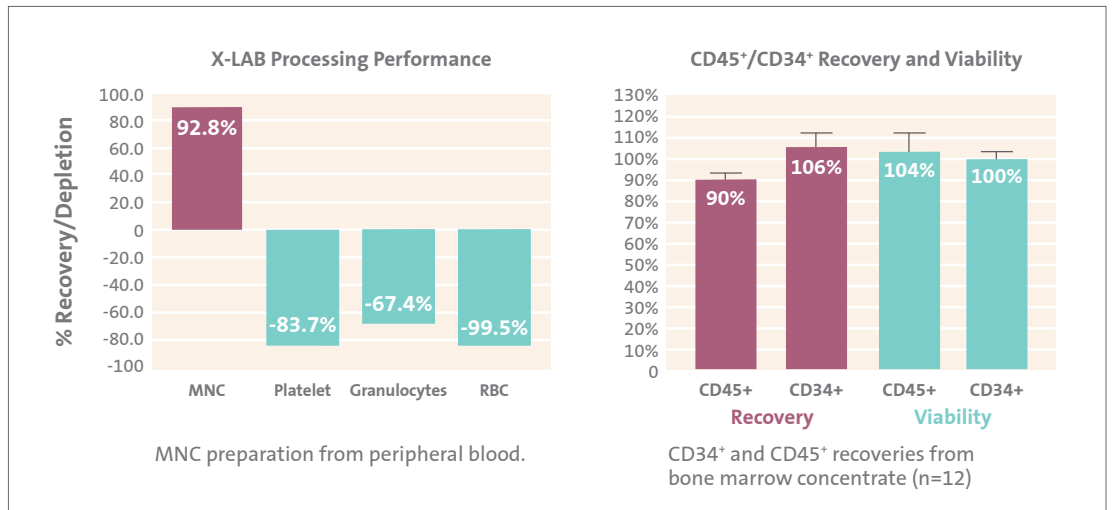
Corning X-LAB control module



Corning X-LAB docking station



Corning X-Balance ring kit



### Ordering Information

| Cat. No. | Description                         | Qty/Cs |
|----------|-------------------------------------|--------|
| 6917     | Corning® X-LAB® control module      | 1      |
| 6918     | Corning X-LAB docking station       | 1      |
| 6930     | X-SERIES® DataTrak software         | 1      |
| 6943     | Corning X-Counterweight             | 1      |
| 6923     | Corning X-Balance ring kit          | 1      |
| 6924     | Corning X-LAB disposable cartridges | 2      |
| 6925     | Corning X-LAB disposable cartridges | 12     |
| 6926     | Corning X-LAB disposable cartridges | 36     |

For more specific information on claims, visit [www.corning.com/certificates](http://www.corning.com/certificates).

**Warranty/Disclaimer:** Unless otherwise specified, these products are US class I medical devices and medical device accessories, as general purpose laboratory equipment labeled or promoted for a specific medical use. Corning does not make or support any further claim for these products nor does it conduct any further testing to support any other intended use for the product indicated above. Should you decide that you want to use the product for any intended use other than that made by Corning then you accept that Corning does not make or support that claim and that you as the user are responsible for any testing, validation, and/or regulatory submissions that may be required to support the safety and efficacy of your intended application.

**CORNING**

Corning Incorporated  
Life Sciences  
[www.corning.com/lifesciences](http://www.corning.com/lifesciences)

**NORTH AMERICA**  
t 800.492.1110  
t 978.442.2200

**ASIA/PACIFIC**  
**Australia/New Zealand**  
t 61 427286832  
**Chinese Mainland**  
t 86 21 3338 4338

**India**  
t 91 124 4604000  
**Japan**  
t 81 3-3586 1996  
**Korea**  
t 82 2-796-9500  
**Singapore**  
t 65 6572-9740  
**Taiwan**  
t 886 2-2716-0338

**EUROPE**  
CSEurope@corning.com  
**France**  
t 0800 916 882  
**Germany**  
t 0800 101 1153  
**The Netherlands**  
t 020 655 79 28  
**United Kingdom**  
t 0800 376 8660

**All Other European Countries**  
t +31 (0) 206 59 60 51

**LATIN AMERICA**  
grupoLA@corning.com  
**Brazil**  
t 55 (11) 3089-7400  
**Mexico**  
t (52-81) 8158-8400